



PROBLEMS X CAUSES X SOLUTION

| PROBLEM | CAUSES | SOLUTION |
|--|---|--|
| The water pump can not work | Choose the OFF The flow are too low to start the water pump (the flow should be more than 1.5l / M) Failure to supply | Choose Auto or Manual Choose the MANUAL Check the electrical connectors |
| Pump stopped | Impurities in the flow switch | Remove the cover to purge and turn the shaft with a screwdriver inserted into the slot of the shaft of the pump remove the head of the pump and the cover of selector and clean the stone |
| The pump can work but it can not increase the pressure | Main valve closed Air in the system | Open the main valve Let pump run for a few minutes with a tap open |
| The pump has noise | Air in the system / pump open | Let the pump run for a few minutes with a tap open |
| The pump still work even the close the tap | Selector position in the Manual Impurities in water pump | Selector position in the OFF or AUTO Remove the head of the pump and the cover of selector flow and clean the stones |

Expiry of guarantee

If there is some problem of the spare parts of the water pump during the guarantee, we will repair or replace the new spare parts for you.

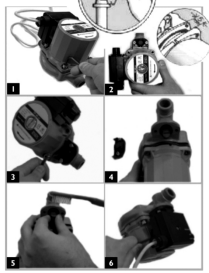
The warranty does not cover the following information:
 1. defects caused by incorrect installation
 2. misuse or abuse
 3. the problems caused by the weather or shipment
 4. bought from other supplier the sign of the products do not match the seal products with the sign of a breach of the seal manufacturer
 5. products exposed to the sun or moisture
 6. defects or problems caused by installations at odds with that manual

FUNCTION OF THE SELECTOR

| | |
|--|---|
| | The pump this parade |
| | The pump automatically work when the tap open the pump stop when the tap closed |
| | The pump Continue operating |

MAINTENANCE AND CLEANING

Disconnect the supply of electric power and take it from the wall.



EXPIRY OF GUARANTEE

Remember if need the technical assistance, bring the invoice and warranty card.

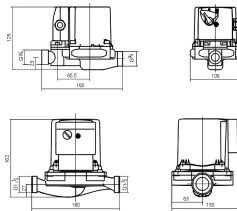
services provided by third parties in the installation or technical assistance Sigma (security) may have additional charges by distance depending on the location of your residence or place of destination product is far from the place where it was purchased.

When a service of the third installation or maintenance on our equipment, should be required of professional chit or receipt equivalent to the breakdown of services prestados. So well, you will have the assurance of professional 90 days of its services. In the case of a problem within this period of guarantees, and the owner of the apparatus, the new service may be charged, even though the unit and the same problem with the guarantee.

When the client chooses to install the unit through assistance which is authorized, the Sigma is not responsible for any damage caused during or after the installation

Dimension

Dimension(mm)



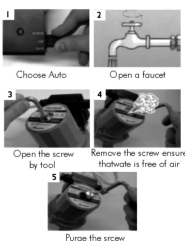
IMPORTANT NOTES

The water which can use in the water pump should be clean and not contain solid particles, fibers or oil. And it can not be easy to burn and explosive.

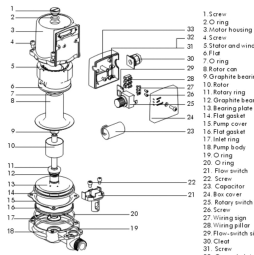


RECOMMENDATION FOR INSTALLATION

1. Recommendation: install a filter online prior to the pump
2. recommended that the unit has a unique circuit breaker
3. The pump should be installed protected and sheltered from sun, rain, etc. ...
4. After installation, recommended to clean (removal of air), the instructions is as following:

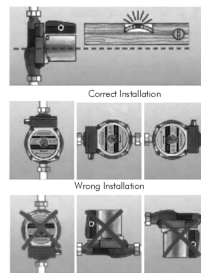


EXPLODED VIEW



RECOMMENDATIONS FOR INSTALLATION

Put a filter before the pump to prevent dirt locks the floatato. The pump should be installed with the engine axis in a horizontal position



Dimension

Do not install the pump in the output of water heater. If the pump is installed in a pipe which may occur for main of air bubbles and recommended to install auto matchbreathe.

