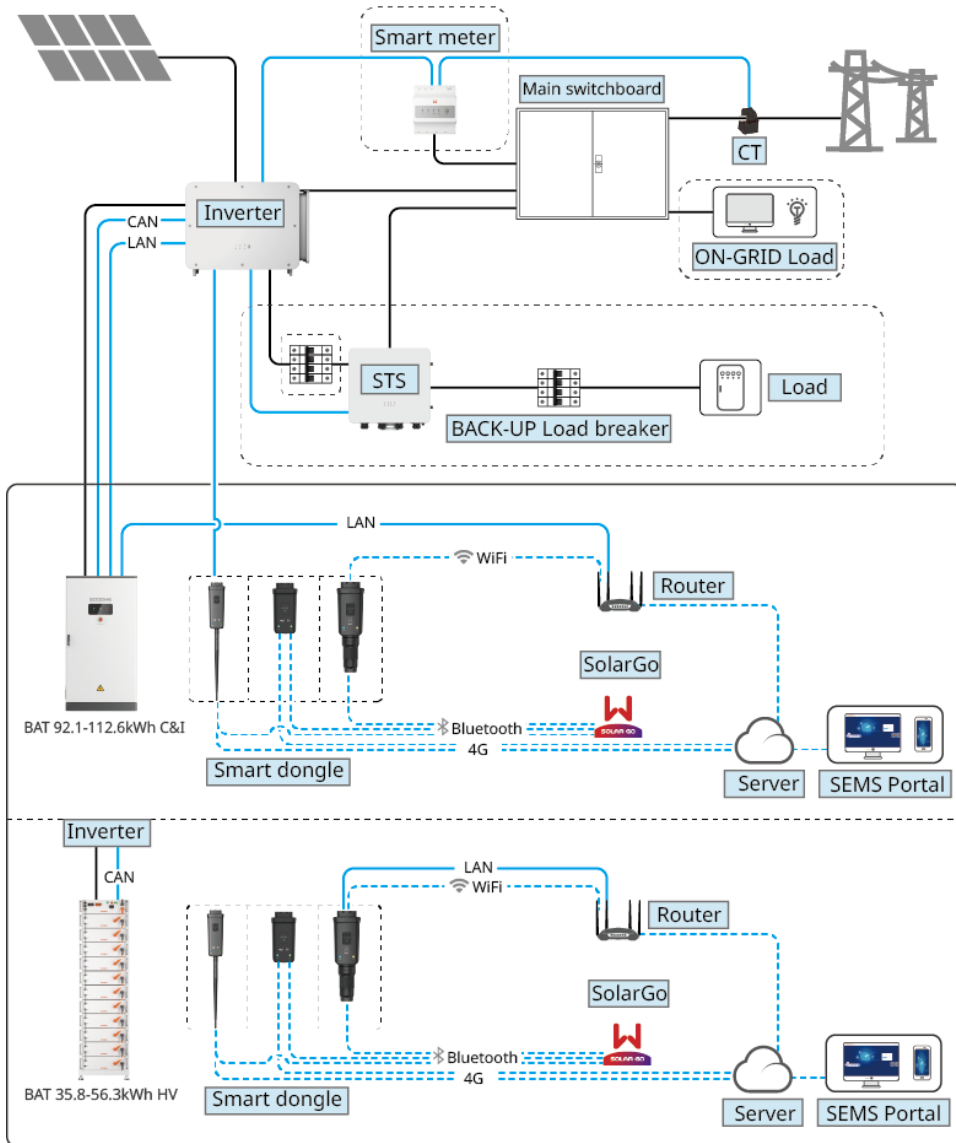


Warning

The information in this quick guide is subject to change due to product updates or other reasons. This guide cannot replace the product labels or the safety precautions in the user manual unless otherwise specified. All descriptions in the manual are for guidance only.

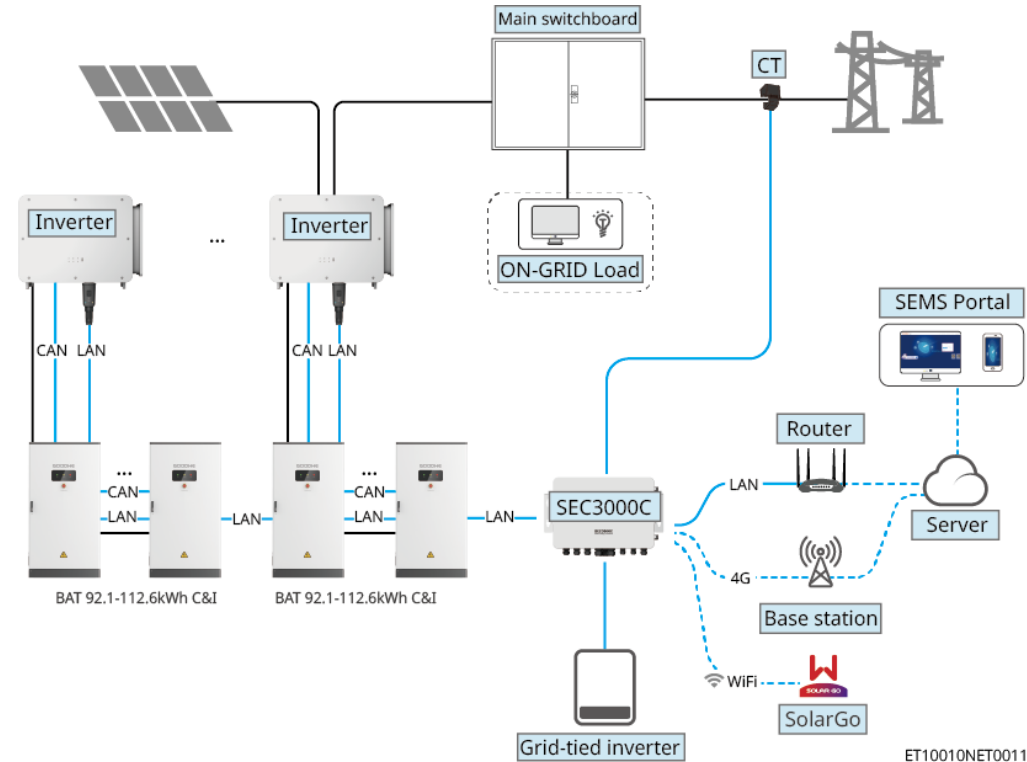
01 Networking Single Inverter Grid-tied and Off-grid Scenario



ET10010NET001

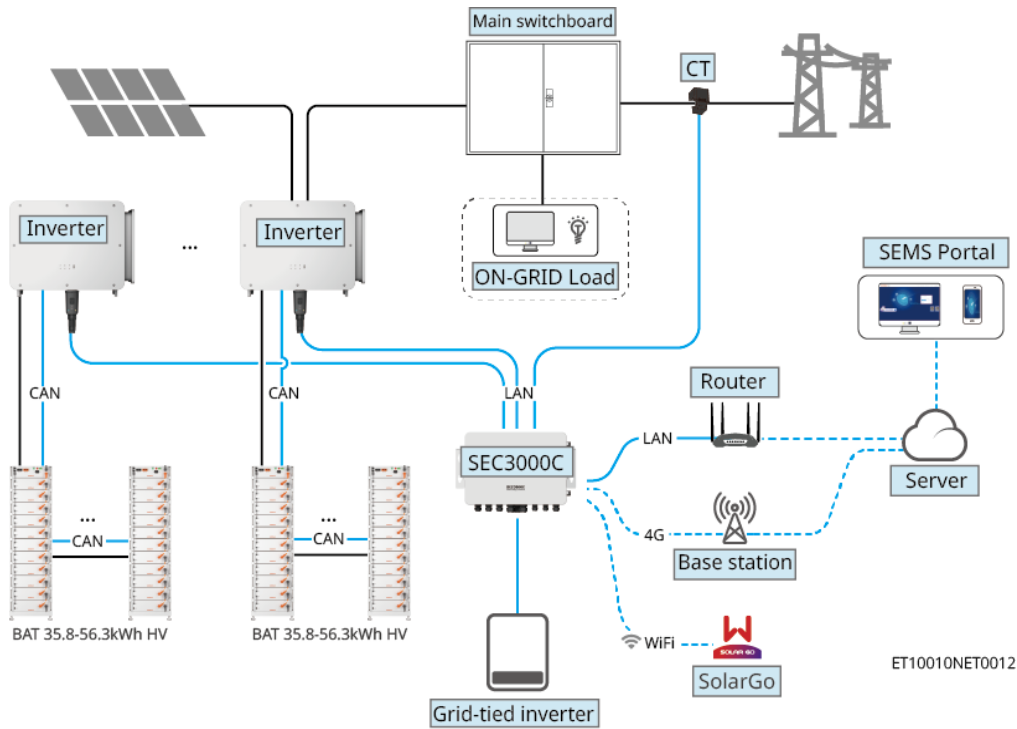
Multiple Inverters Pure Grid-tied Scenario

Type 1: Inverter paired with BAT 92.1-112.6kWh commercial and industrial battery system



ET10010NET0011

Type 2: Inverter paired with BAT 35.8-56.3kWh high-voltage battery system



Product	Model	Explanation
Inverter	GW50K-ET-L-G10 GW75K-ET-G10 GW80K-ET-G10 GW99.99K-ET-G10 GW100K-ET-G10	-
STS	GW125K-STS-G10	Applicable only to Scenario with off-grid application. If the energy storage system needs to use BACK-UP function, it needs to work with STS.

Product	Model	Explanation
Battery System	GW35.8-BAT-I-G10 GW40.9-BAT-I-G10 GW46.0-BAT-I-G10 GW51.2-BAT-I-G10 GW56.3-BAT-I-G10	<ul style="list-style-type: none"> A maximum of 6 battery systems can be connected in parallel in a system. The inverter has 2 pairs of battery input terminals. One battery system can be connected to the two inverter's battery terminals which are paralleled, or two battery system can be connected to two battery terminals independently. Each battery input terminals can connect up to 6 paralleled battery systems. Battery systems of different models cannot be connected in parallel together.
	GW92.1-BAT-AC-G10 GW102.4-BAT-AC-G10 GW112.6-BAT-AC-G10	<ul style="list-style-type: none"> The inverter has 2 pairs of battery input terminals. One battery system can be connected to the two inverter's battery terminals which are paralleled, or two battery system can be connected to two battery terminals independently. Each battery input terminals can connect up to 4 paralleled battery systems. Battery systems of different models cannot be connected in parallel together.
Smart Energy Controller	SEC3000C	<ul style="list-style-type: none"> Applicable to inverter paralleling application only For SEC3000C related requirements, installation, wiring, and other information, please refer to SEC3000C User Manual
Smart meter	GM330	<ul style="list-style-type: none"> Please use GM330 smart meter in inverter parallel scenario; In single inverter scenario, GM330 smart meters can be used. GM330: Order the CT for GM330 from GoodWe or other suppliers. CT ratio: nA/5A. <ul style="list-style-type: none"> nA: CT primary input current, n ranges from 200 to 5000. 5A: CT Secondary input current.
Smart dongle	<ul style="list-style-type: none"> 4G Kit-G20 4G Kit-CN-G20 (China market only) WiFi/LAN Kit-20 	-

Steps	1 Installation	2 PE	3 PV	4 Battery	5 AC	6 COM	7 Communication module
Inverter							WiFi/LAN Kit-20 4G KIT-G20 4G KIT-CN-G20
Tools	1A D: 80mm φ: 10mm 1B M8 12N·m 2 M6 3-5N·m	M8 7-12N·m	Recommend: PV-CZM-61100	Recommend: YQK-70	1 M12 20-30N·m 2 M8 7-10N·m	1 2 M4 1.2N·m	1 2 M4 1.2N·m

Steps	1 Installation	2 PE	3 Battery	4 COM	5 Air-conditioner wiring
Battery BAT 92.1-112.6kWh C&I					
Tools	1 D: 80mm φ: 14mm 2 M12 50N·m	M5 4N·m	 Crimping tool	1	M4 1.2N·m

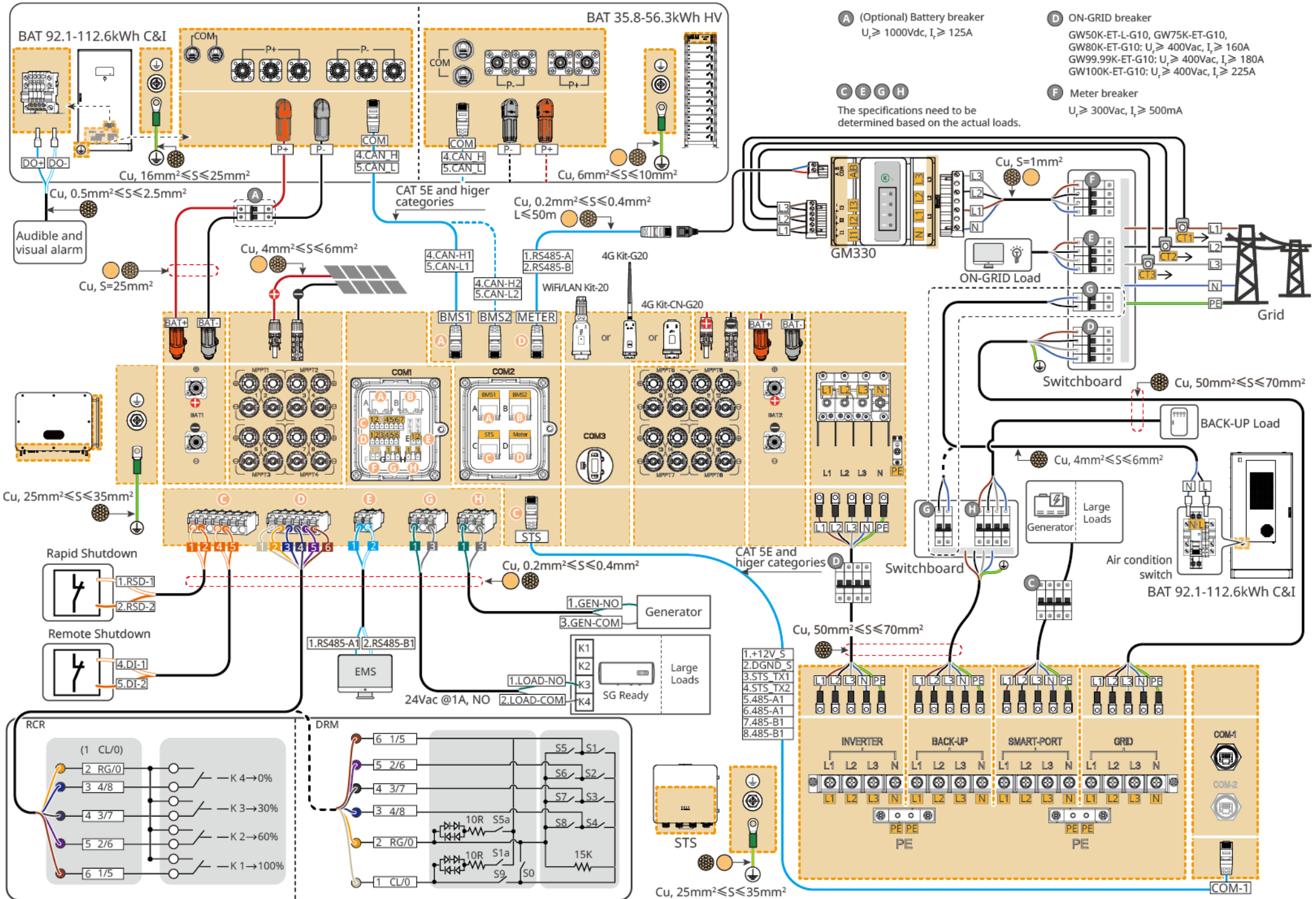
Steps	1 Installation	2 PE	3 Battery	4 COM
Battery BAT 35.8-56.3kWh HV				
Tools	1 3 M5 4N·m 2A D: 80mm φ: 14mm M12 50N·m 2B M5 4N·m ST6.3 10-11N·m	M5 4N·m	 Crimping tool	

Steps	1 Installation	2 PE	3 AC	4 CT	5 COM	6 ETH	7 4G	8 DO/DI/AI/PT
Controller SEC3000C								
Tools	A B D: 70mm Φ: 15mm A M12 42N·m B C M10 24N·m	M5 1.5-2N·m	M7 2-2.5N·m	0.5N·m				M2 0.5N·m

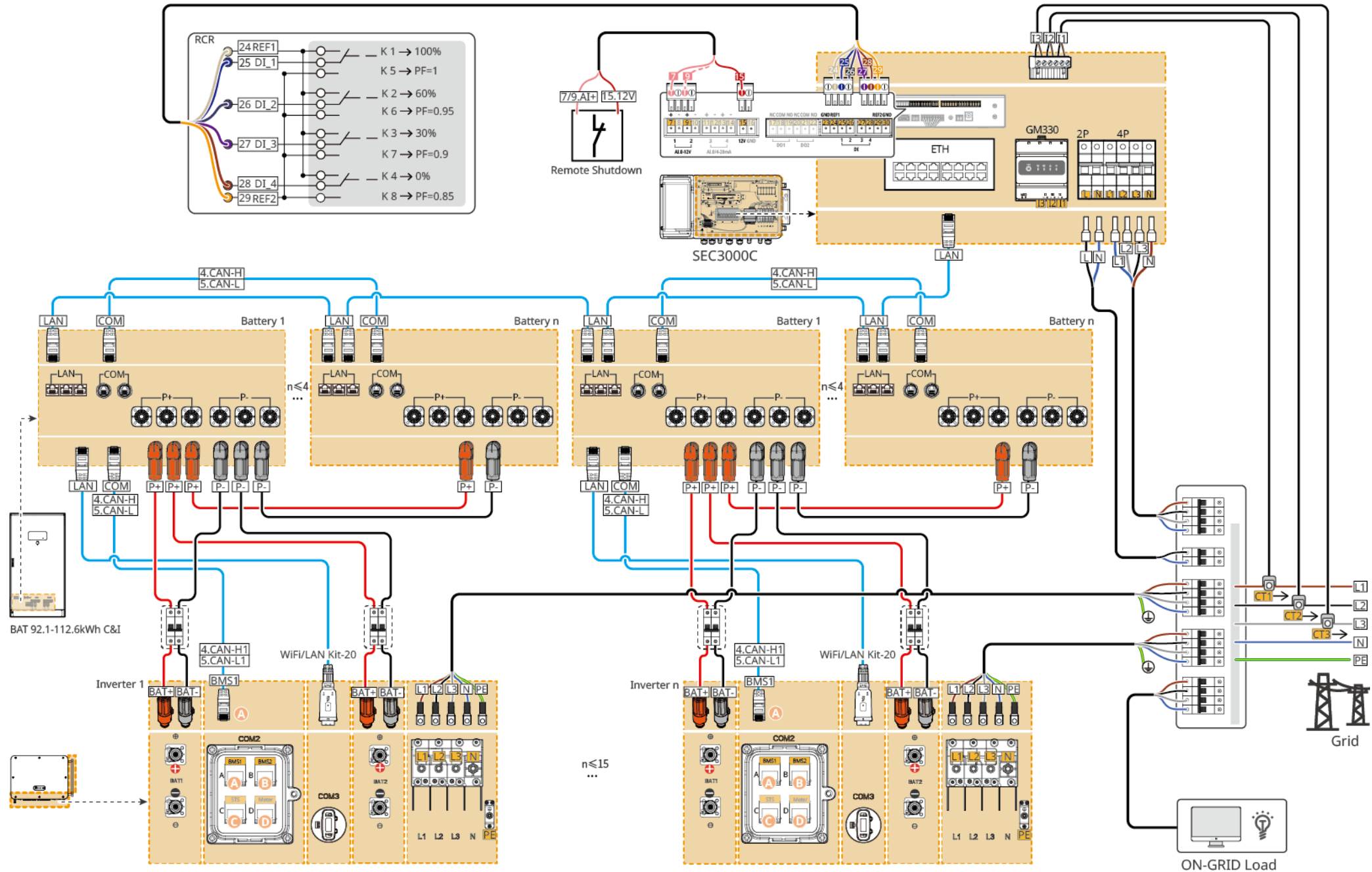
Steps	1 Installation	2 PE	3 AC	4 COM	Steps	1 Installation	2 Cable Connections	3 Power	4 Commissioning
STS					Smart meter GM330				
Tools	D: 60mm Φ: 8mm	M8 5-8N·m	1 M8 5-8N·m 2 M10 6-8N·m 3 44mm 7-7.5N·m				1.2-2N·m	AC breaker	SolarGo APP SEMS Portal APP or SEMS Portal WEB

03 Wiring Diagram

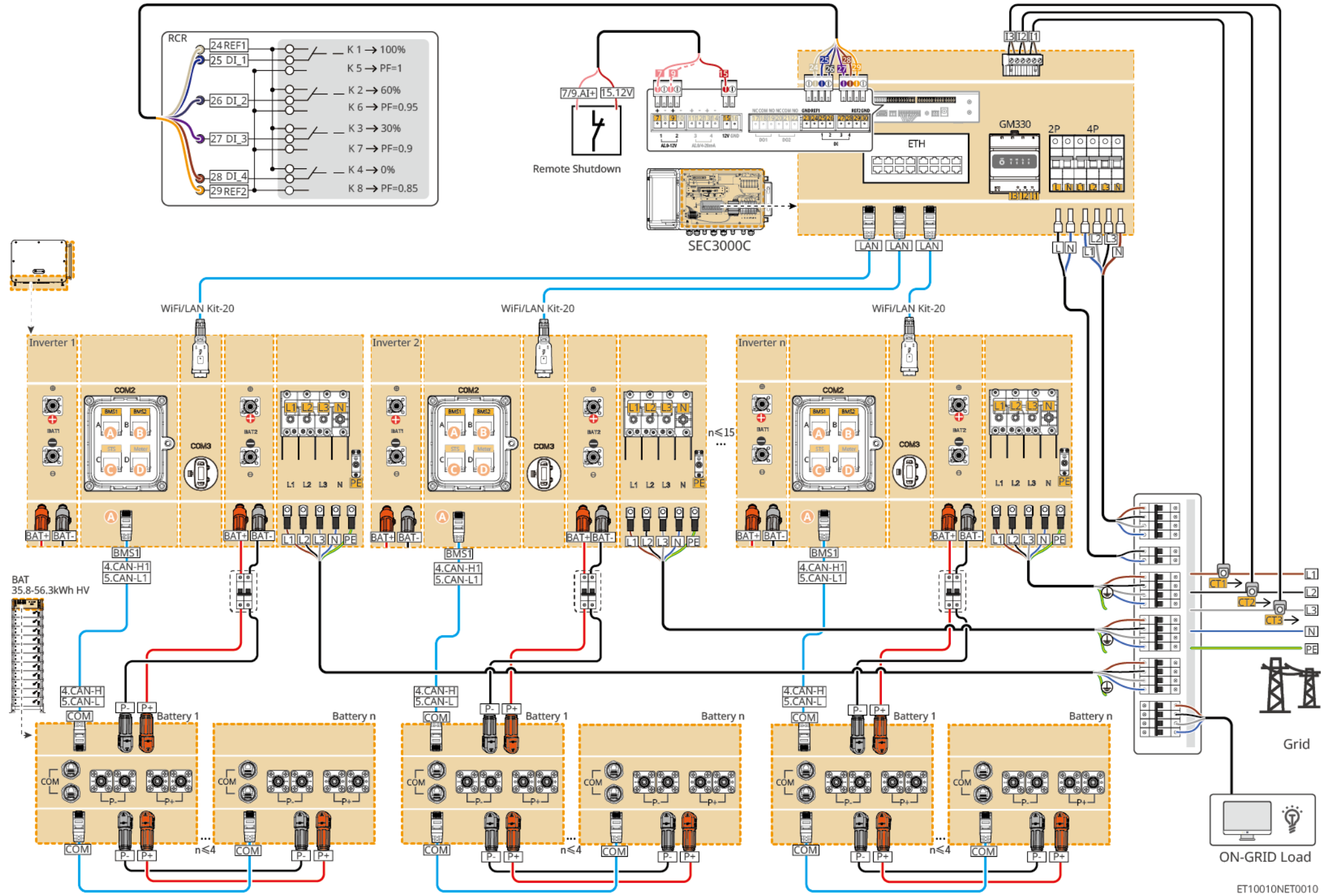
Single Inverter with BACK-UP Function (Inverter+ GM330+ Battery + Smart Dongle) (Partial Back-up)

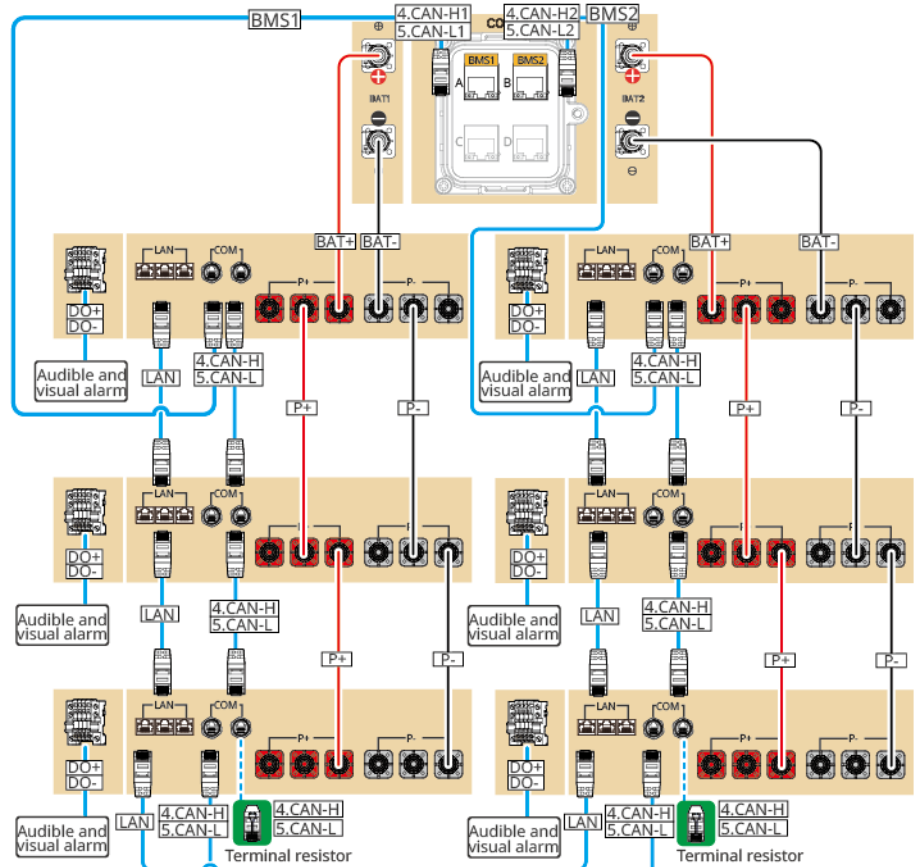
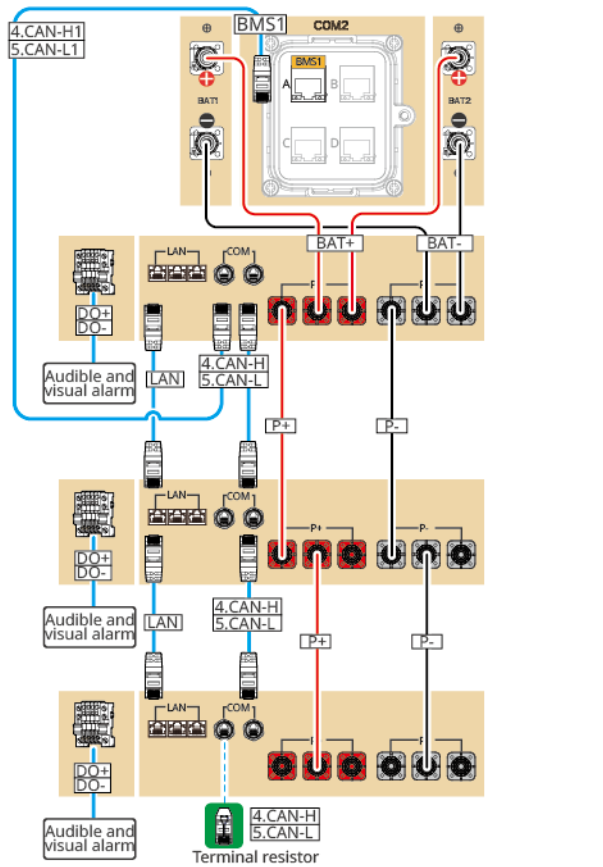
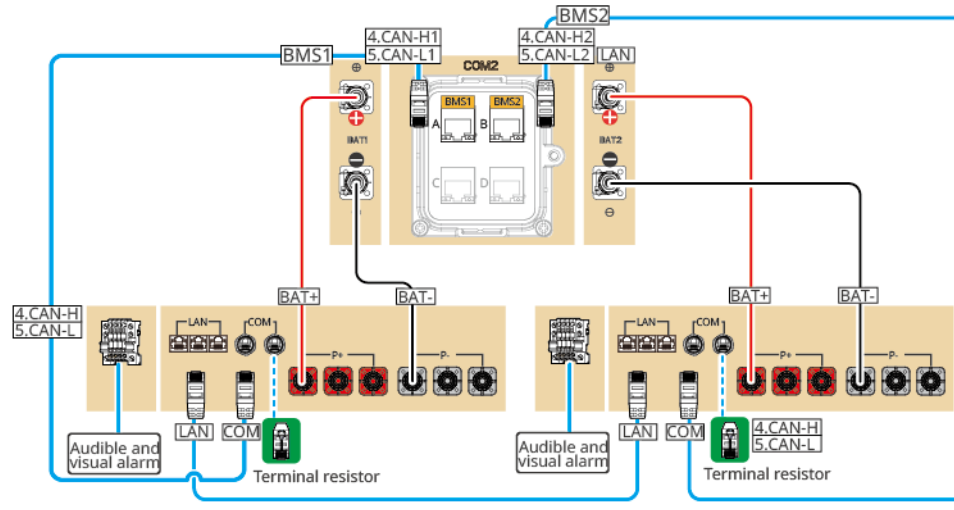
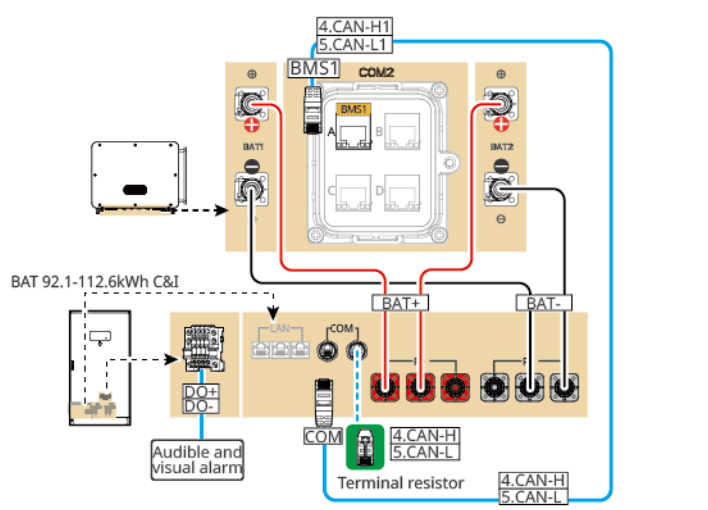


Inverter Paralleling (Inverter+ GM330+ Battery BAT 92.1-112.6kWh C&I+SEC3000C battery system+ Smart Dongle) (Whole Home BACK-UP)



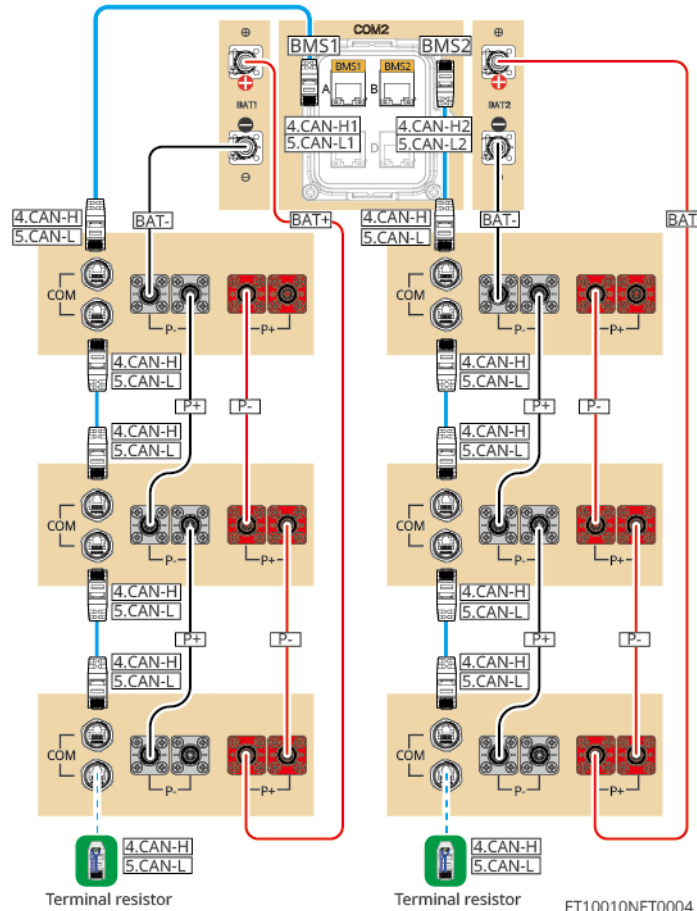
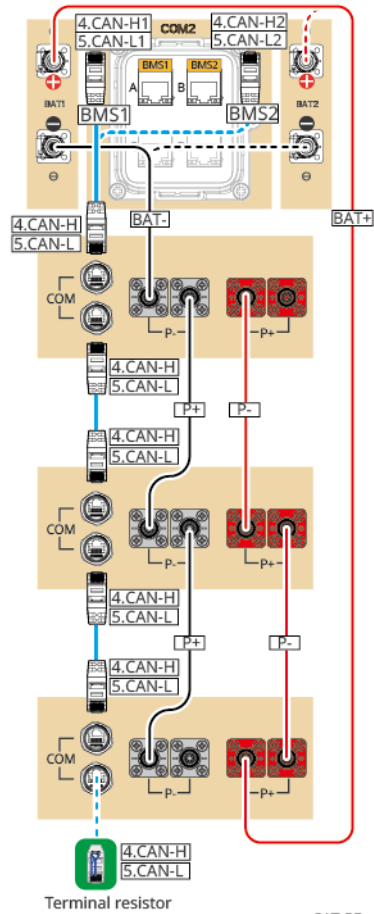
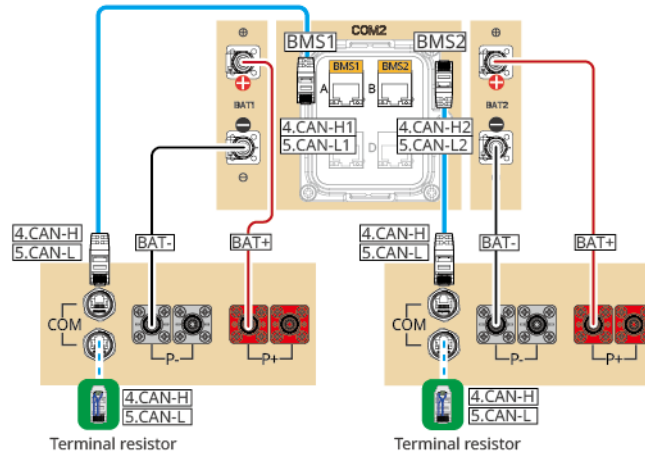
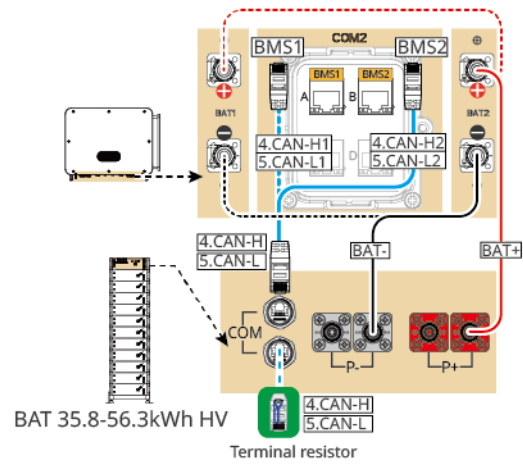
Inverter Paralleling (Inverter+ GM330+ BAT 35.8-56.3kWh HV+SEC3000C battery system+ Smart Dongle) (Whole Home BACK-UP)



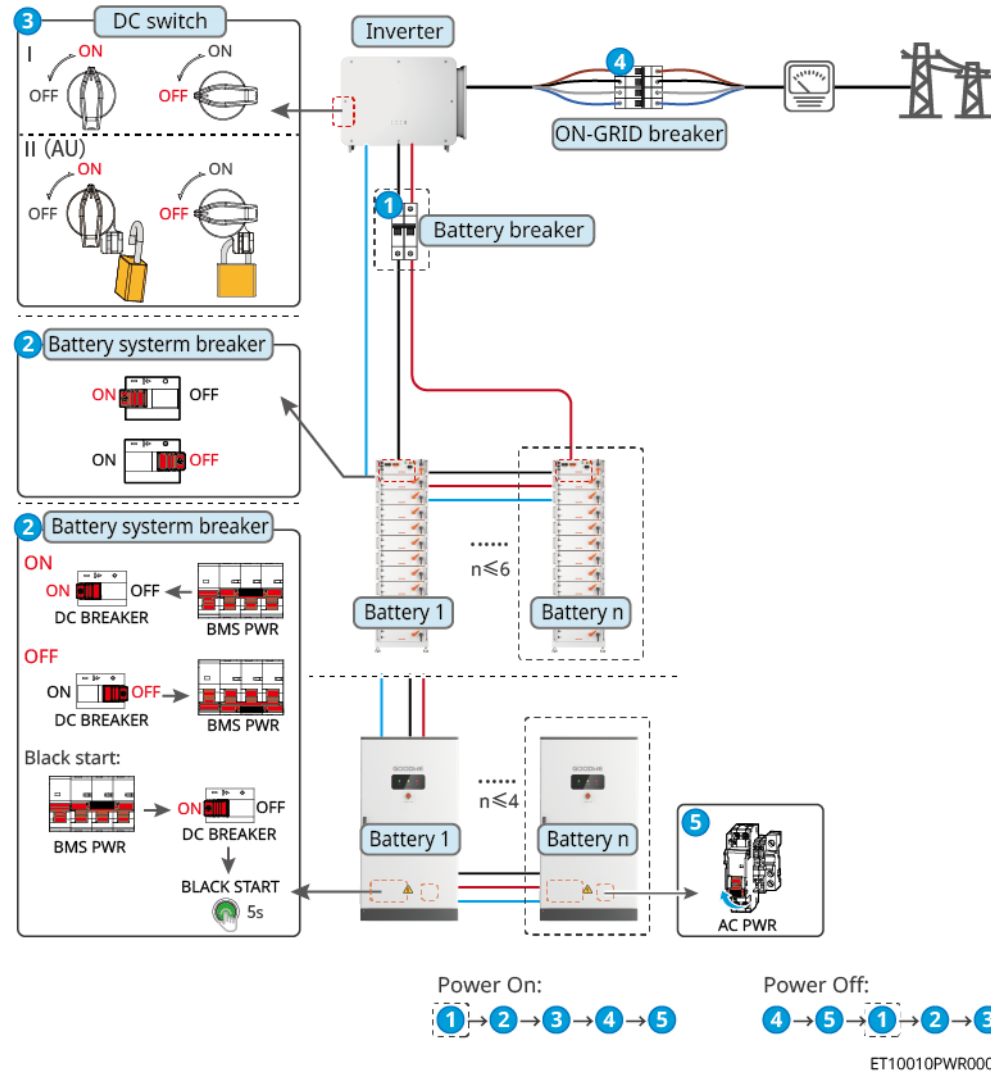


— CAT 5E and higher categories

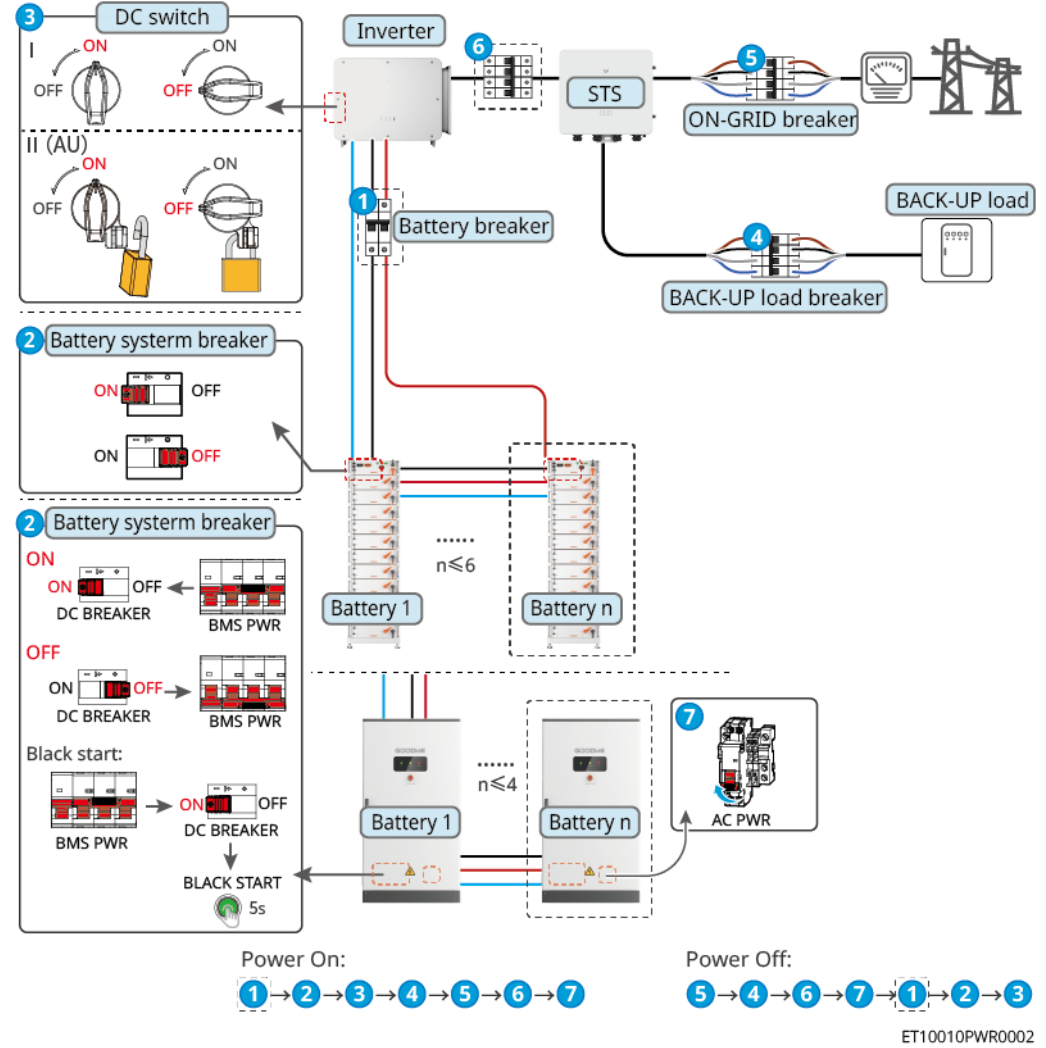
ET10010NET0003



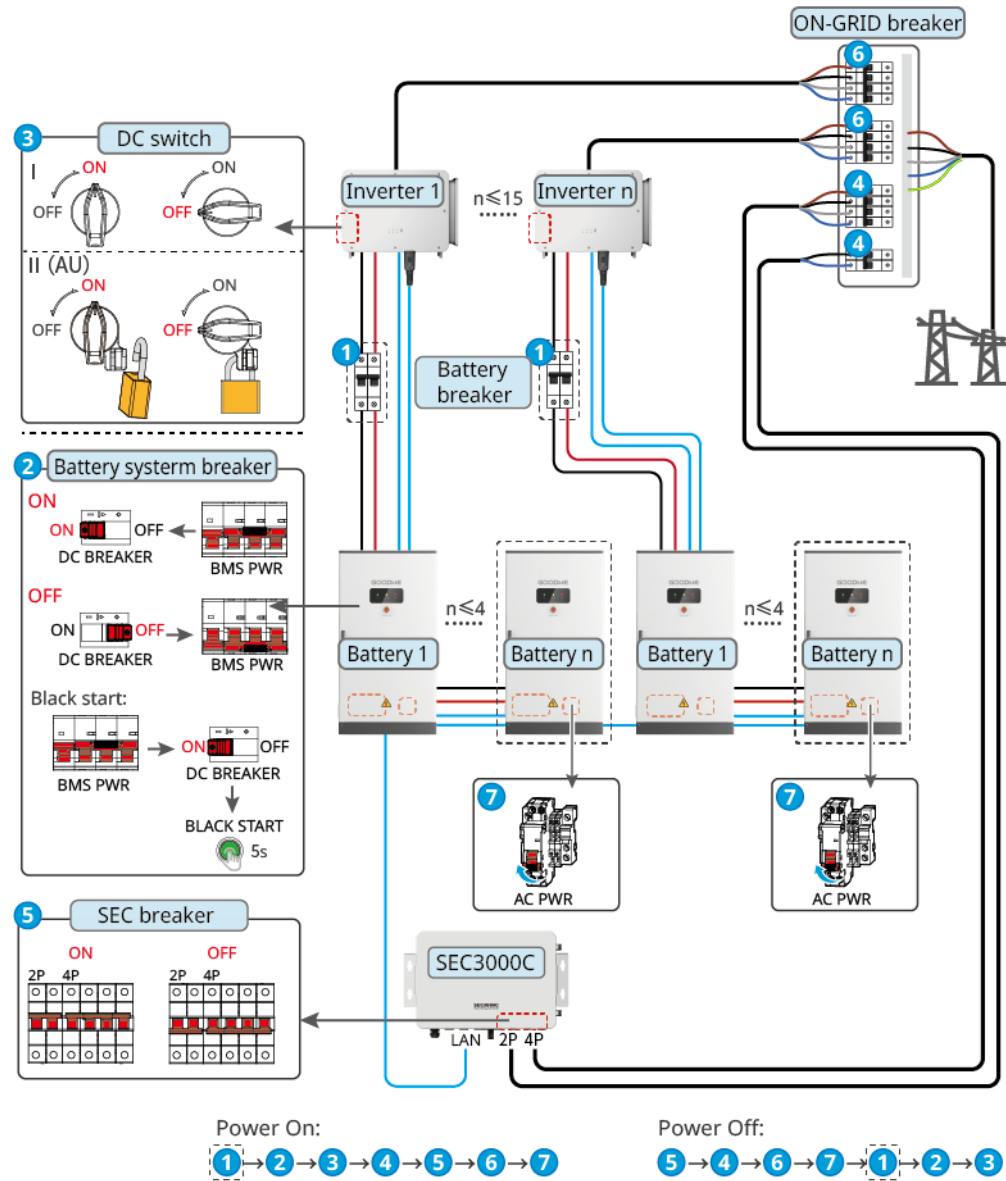
Single Inverter without Off-Grid Application



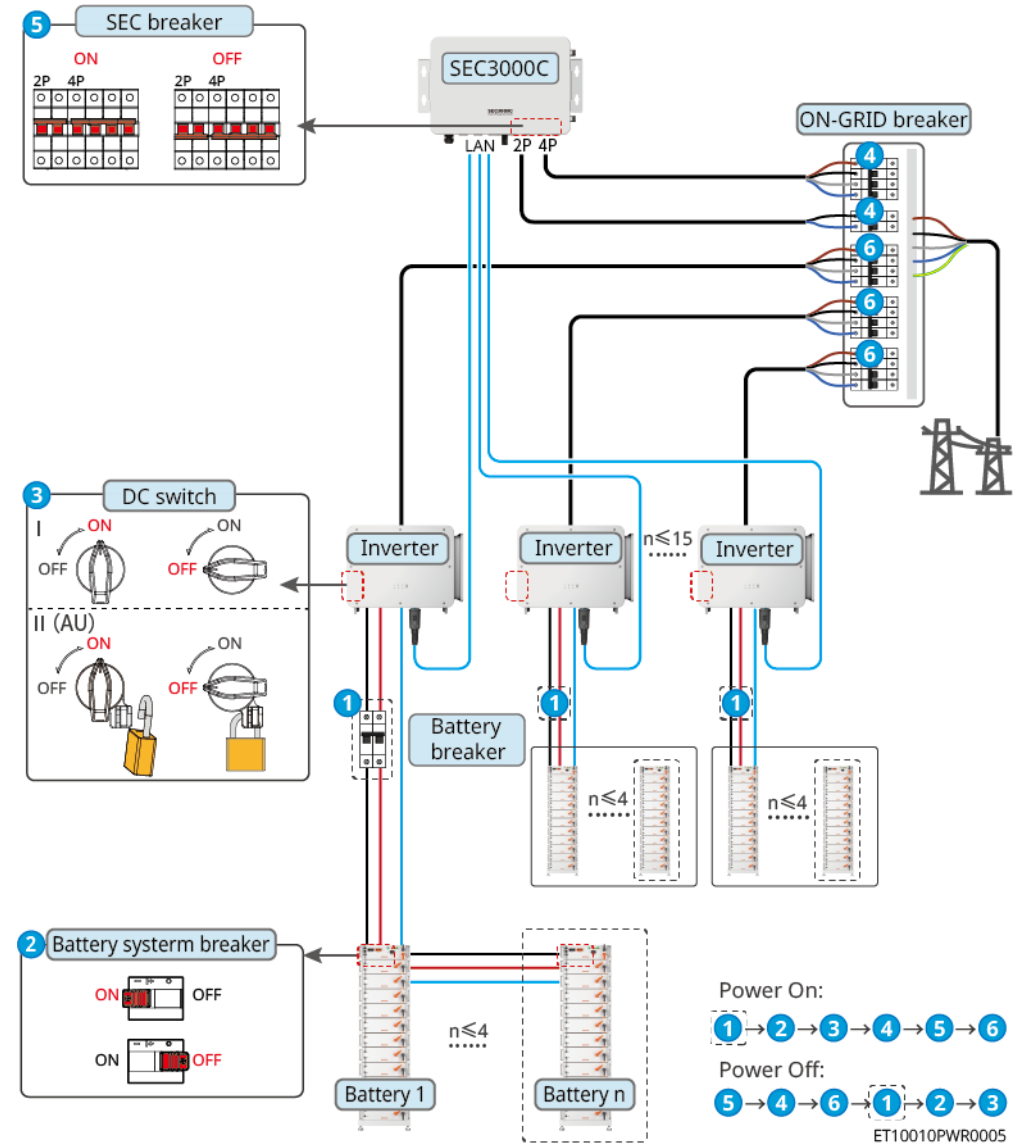
Single Inverter with Off-Grid Application



Inverter Paralleling Paired with BAT 92.1-112.6 kWh C&I



Inverter Paralleling Paired with BAT 25.6-56.3 kWh High Voltage Battery System





SolarGo APP



SEMS+ App

Download and open the app, then follow the on-screen instructions to connect to the inverter signal.

Quick Settings

Method I: Tap **Home** > **Settings** > **Quick Settings** to complete quick settings step by step.

Installer password: goodwe2010

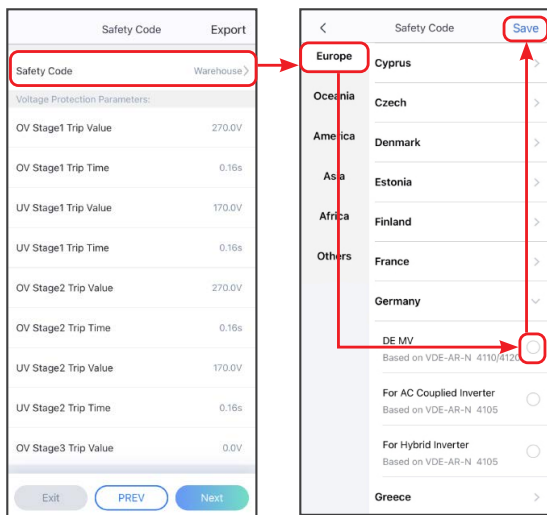
Method II: Using LCD screen to finish quick settings. Click on the screen or use buttons to operate.

> **Quick Setting**, follow the prompts to complete inverter settings.

Advanced function page initial password:1111

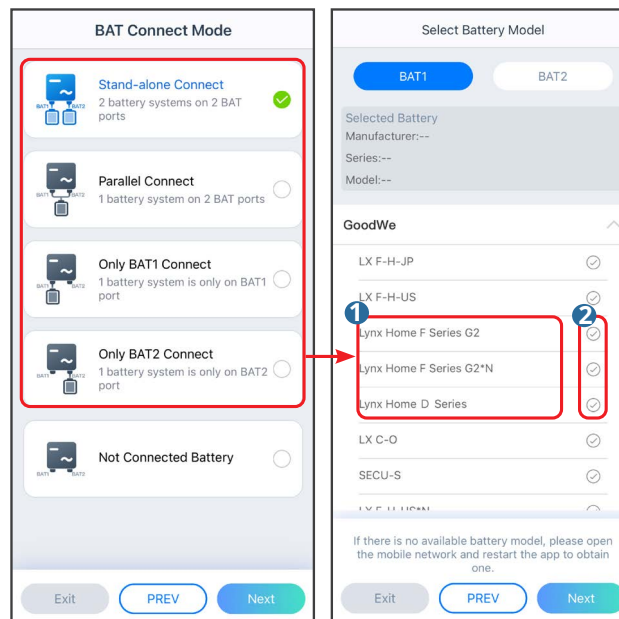
Setting Safety Code

Setting safety code via SolarGo APP



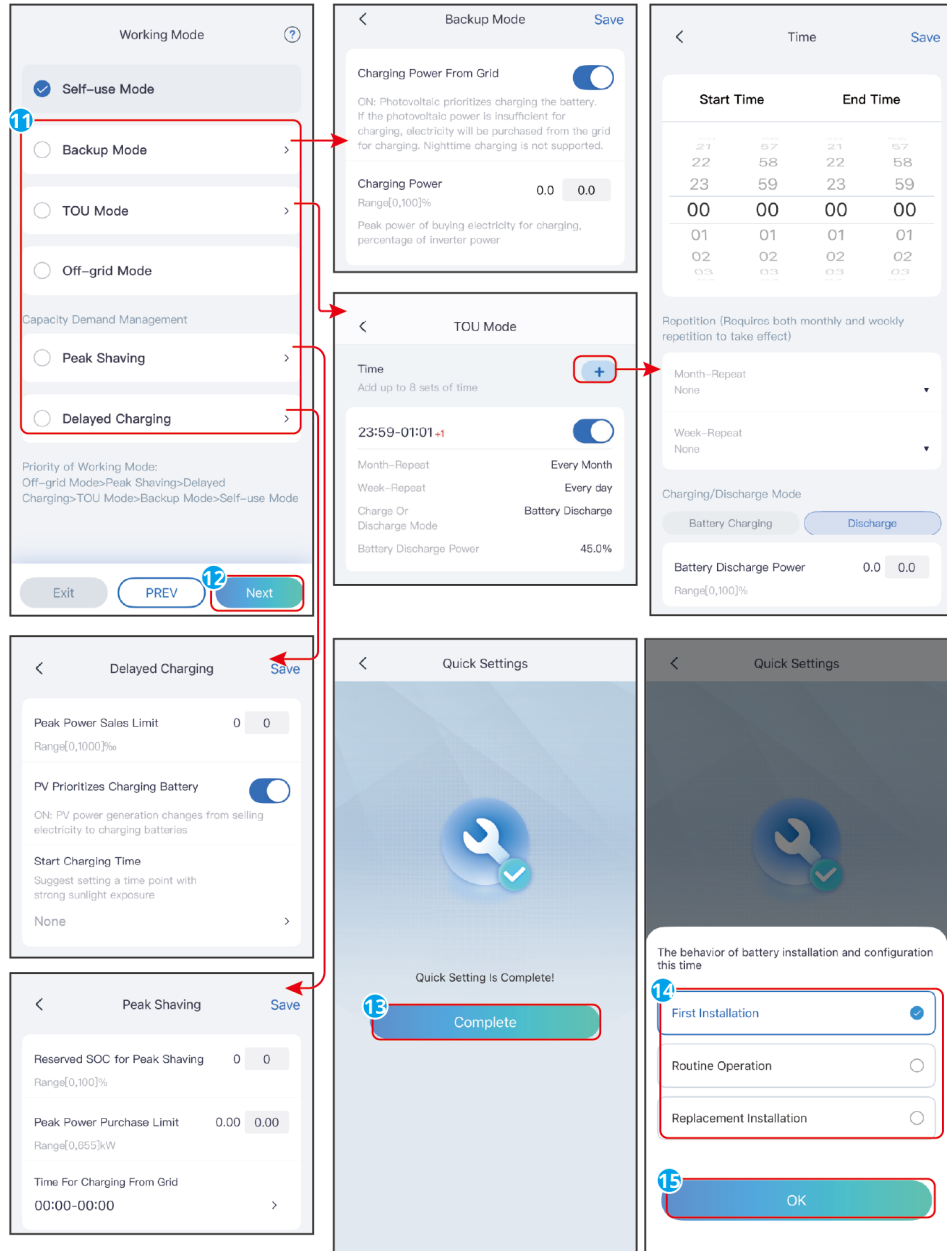
Setting the BAT Connect Mode

Setting the BAT Connect Mode via SolarGo APP



Setting the Working Mode

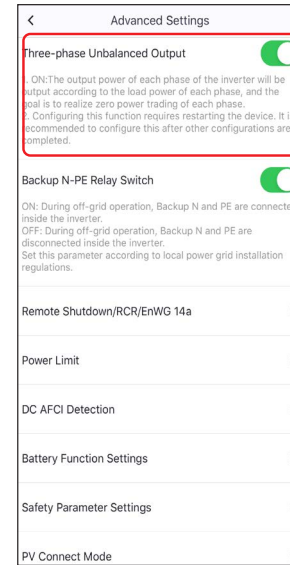
Setting working mode via SolarGo APP



SLG00CON0060

Tap **Home** > **Settings** > **Advanced Settings** to set the following functions.

Three-phase Unbalanced Output Function (Optional)

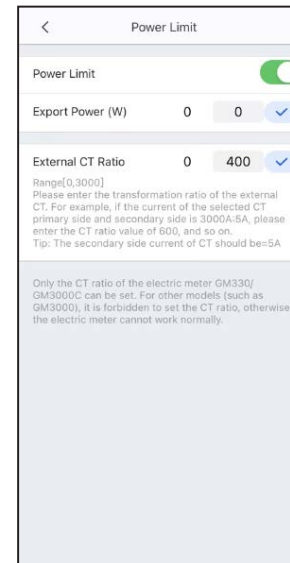


Enable **Three-phase Unbalanced Output** when the utility grid company adopts phase separate billing.

Setting the Power Limit Function

Setting Power Limit via SolarGo APP

Tap **Home** > **Settings** > **Advanced Settings** to set the following functions.



Configuring the Network

Tap the SolarGo APP, Tap **Home > Settings > Communication Settings > WLAN/LAN** to set network parameters.

WiFi/LAN Kit-20

Network Settings Save

WLAN

Network Name
GOODWE-yanfa-test

Encryption Type
WPA2/WPA

Password

DHCP

If you need to set a specific IP address, you can manually enter it after turning off DHCP.

IP address 192.168.209.206

Subnet Mask 255.255.255.0

Gateway address 192.168.209.254

DNS server 192.168.181.167

LAN

DHCP

If you need to set a specific IP address, you can manually enter it after turning off DHCP.

IP address 0.0.0.0

Subnet Mask 0.0.0.0

Gateway address 0.0.0.0

DNS server 0.0.0.0

[Restore factory communication settings](#)

Creating a Power Plant

Create power plants and add equipments via SEMS + app.

SEMS0011

The top row of screenshots shows the SEMS+ app interface. The first screenshot is the main dashboard with a 'Generation Today' summary (20.30 kWh) and a 'Total Installed Capacity' gauge (9 Plants). The second screenshot shows a list of power plants with columns for name, capacity, and status. The third screenshot shows a 'Services' menu with options like Warranty, Report Center, and GoodWe News. Red boxes and numbers 1-3 highlight the 'Add' button (1), search bar (2), and navigation icons (3).

Create Plant

Owner's email address
Enter owner's email address

Plant Name*
Enter plant name

Plant Address*
Select your plant address

Plant Time Zone*
Select your plant time zone

Detailed Plant Address
Enter your detailed address

Plant Category*
Select your plant category

Currency*
GBP

Plant Capacity*
Enter your plant capacity kWp

Modules
Enter the number of solar panels

Rate of revenue*
0.22 GBP/kWh

Plant Profile Photo
Add Photo

Save & Continue

Save & Exit

100.00 kWp

Device SN
Enter or scan your device SN

Device Name
Enter or scan your device name

Check Code
Enter the correct check code

Done

This screenshot shows the power plant list after a new plant has been added. A red arrow points from the 'Done' button in the previous screenshot to the 'Add' button in this one, indicating the flow of the process.

GoodWe Technologies Co., Ltd.

No. 90 Zijin Rd., New District, Suzhou, 215011, China

www.goodwe.com

service@goodwe.com