

1000V-32A

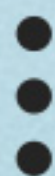


WIRE END PHOTOVOLTAIC CONNECTOR

Copper plated with tin | Flame retardant and wear-resistant | IP67 protection

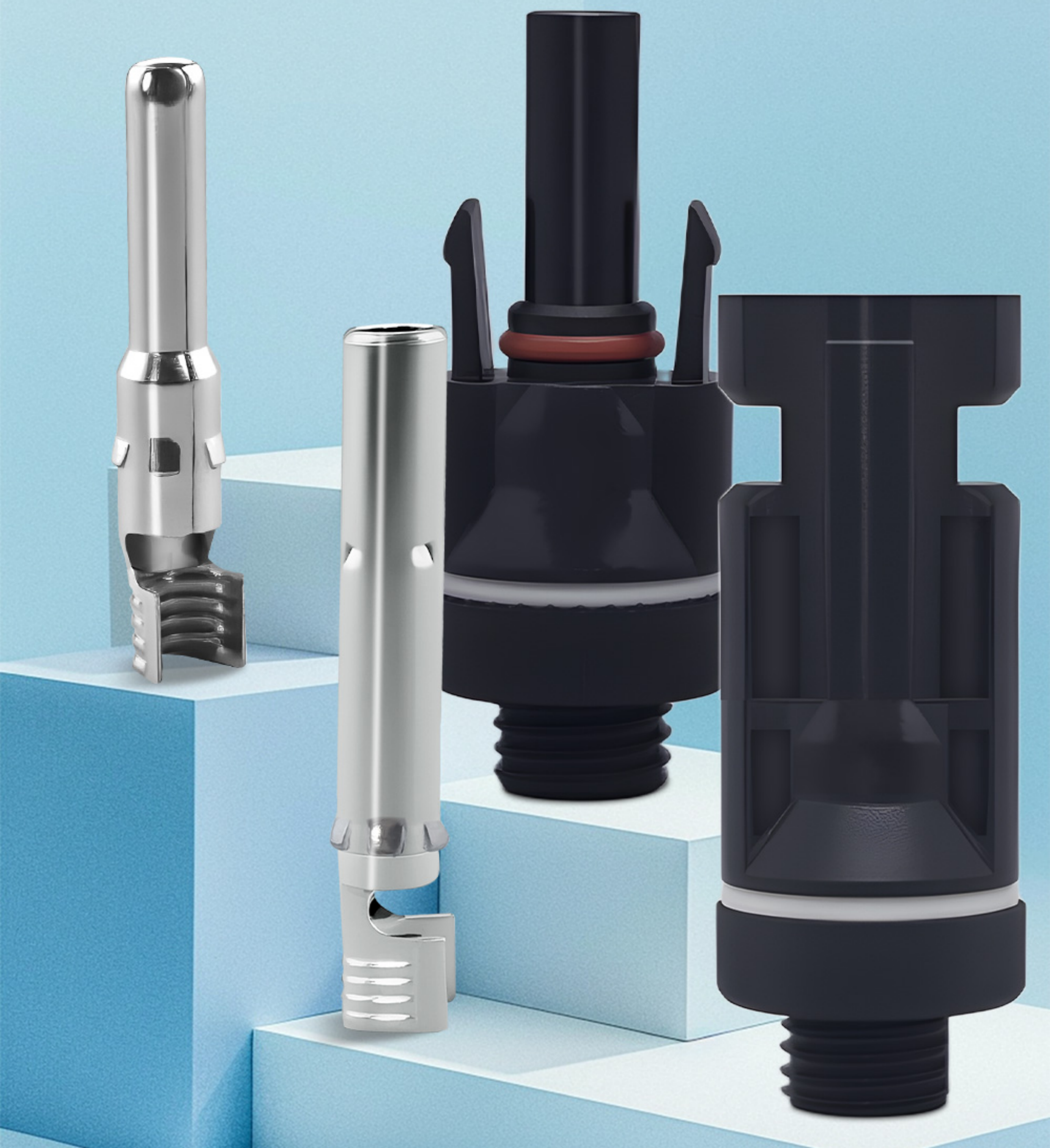


1000V-32A



BOARD END PRODUCT DISPLAY

Male female docking plug solar IP67 waterproof power generation module



Applicable scenarios



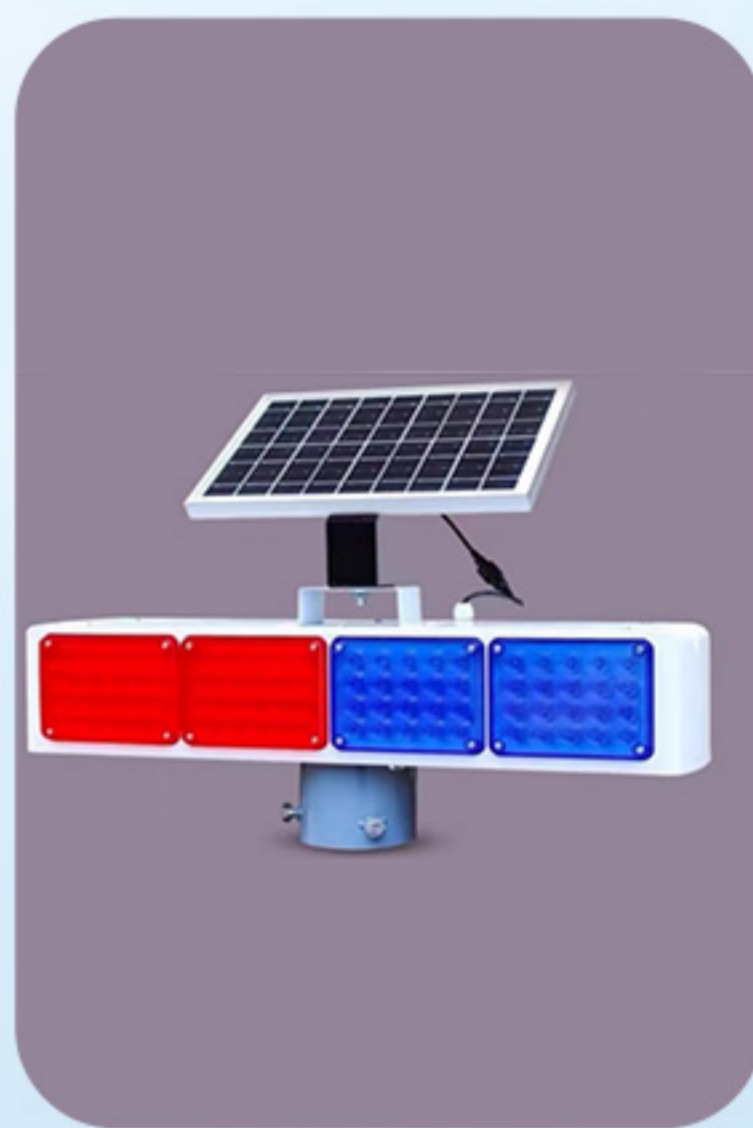
There are many industries where it can be applied



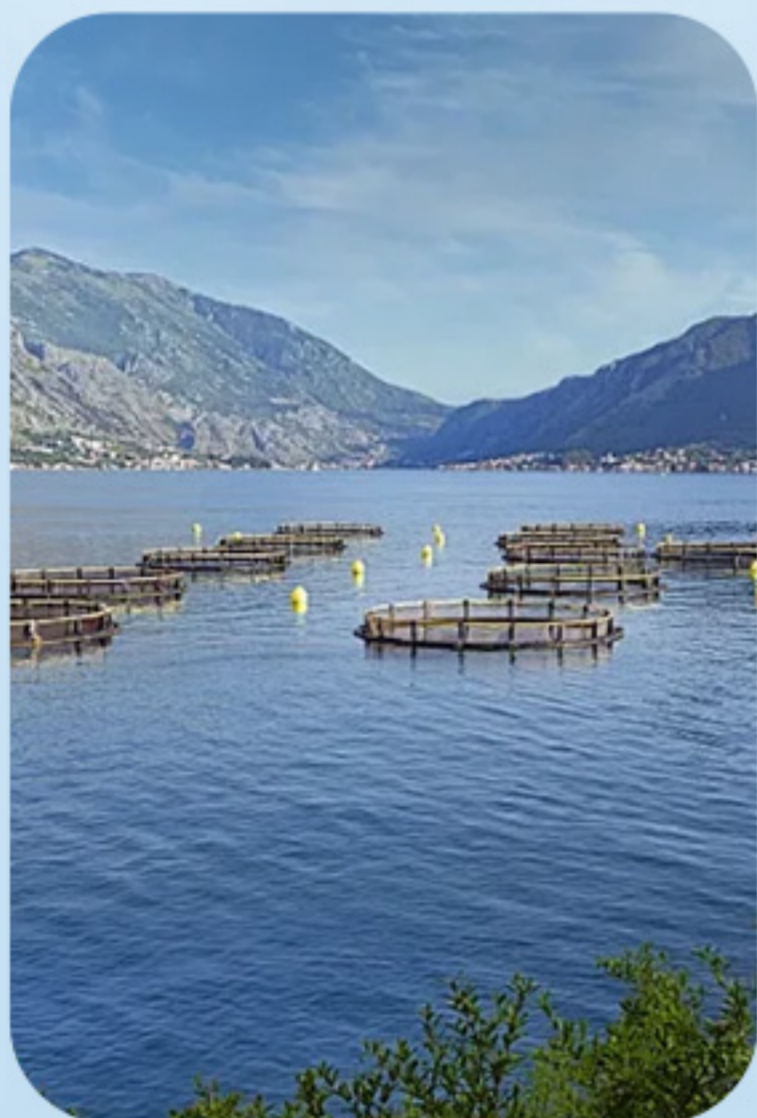
Family roof



Greenhouse farming



Traffic lights



Fishery aquaculture



Deep water irrigation



Parking charger

Product details



Precise structure, secure snap-fit, hard to loosen.



Insulation material to prevent electric shock :

The hole contacts of the product are equipped with guiding insulation components, which play a role in guiding insulation



Positive and negative wiring of the product



Positive and negative poles of the inner core
Instructions for plug-in wiring



Negative core



Negative pole plug



Positive pole plug



Positive electrode core

Core Features

Enhance your feelings



Copper tin plating



Flame retardant and wear-resistant



Thickened and wear-resistant



Conductive stability



Copper core conductor



IP67 protection



Fearless of harsh environments



Strong adaptability to the environment, able to use with confidence even in harsh environments

High temperature resistance

125 °C



Anti low cold

-40°C

Thickened Copper Core Tin Plating Process

High precision oxygen free copper material with low resistance, more conductive, corrosion-resistant, and oxidation resistant



Made with new materials



Strong heat resistance, flame retardancy,
and wear resistance



Selecting raw materials



Heat resistant and flame retardant



Naimo

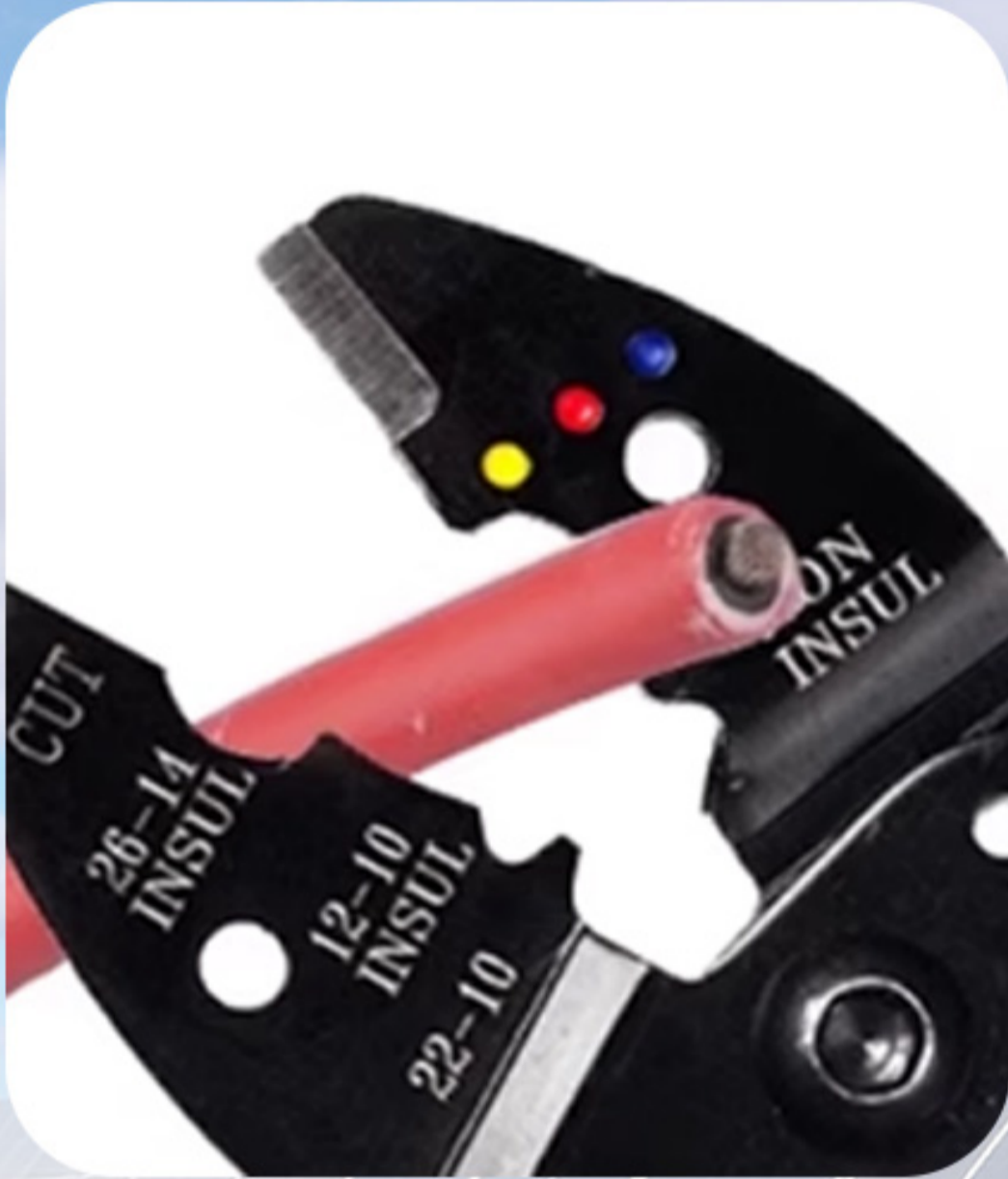


IP67 protection level ⋮

Waterproof and dustproof structure is tight, with 7rubber sealing ring inside, IP67 waterproof and dustproof rating



Instructions for using photovoltaic connectors



① Pull the wire by about 1 centimeter



② Use MC4 crimping pliers to crimp the inner core



③ Insert the inner core into the connector and tighten the nut



④ Simply connect both ends to use normally

1000V product parameters

...

Male and female plug connection display



product name:

**MC4 photovoltaic
connector 1000V**

Shell material:

PPO material

Insulation resistance:

>500M Ω

Core material:

**Copper CN Nickel
plated SN**

Plug resistance:

<0.5M Ω

Wiring specifications:

2.5/4.0/6.0 MM²

Working voltage:

\leq DC1000V

Test voltage:

DC6000V

Protection level:

IP68

Working current:

<35A

Pollution level:

CATII/2

Temperature range:

-40 $^{\circ}$ C~-125 $^{\circ}$ C

Product Photograph



wire end



board end