

TOMZLN

TOMZLN office store

AFDD

- ✓ Fault arc protection
- ✓ Short-circuit protection
- ✓ Overload protection
- ✓ Residual Current Protection



HIGH-QUALITY

Arc fault protection device

- ✓ 35mm DIN Rail
- ✓ Dual-wire connection method

- ✓ 230VAC
- ✓ 16-63A

Arc Fault Detection Device

Prevent fire hazards caused by fault arcs resulting from poor electrical connections, aging wiring, and poor insulation in electrical circuits.

Fault arc protection

Overload protection

Short-current protection

Residual Current Protection

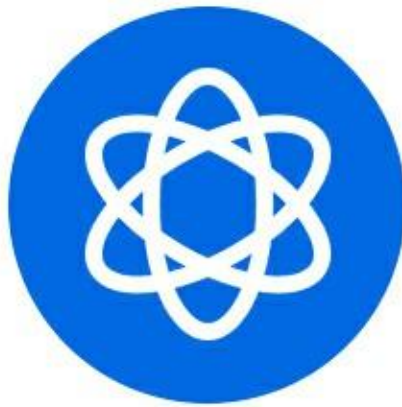


• OUR ADVANTAGES •

AFDD+RCB



35mm DIN
Rail



PA66



Residual Current
Protection



Short circuit
protection



Fault arc
protection



Overload
protection

• STOP ELECTRICAL •

Upon detecting a current waveform consistent with a dangerous arc fault, the AFDD promptly cuts off the circuit power to prevent a fire from occurring.



STRONG ENVIRONMENTAL TEMPERATURE ADAPTABILITY

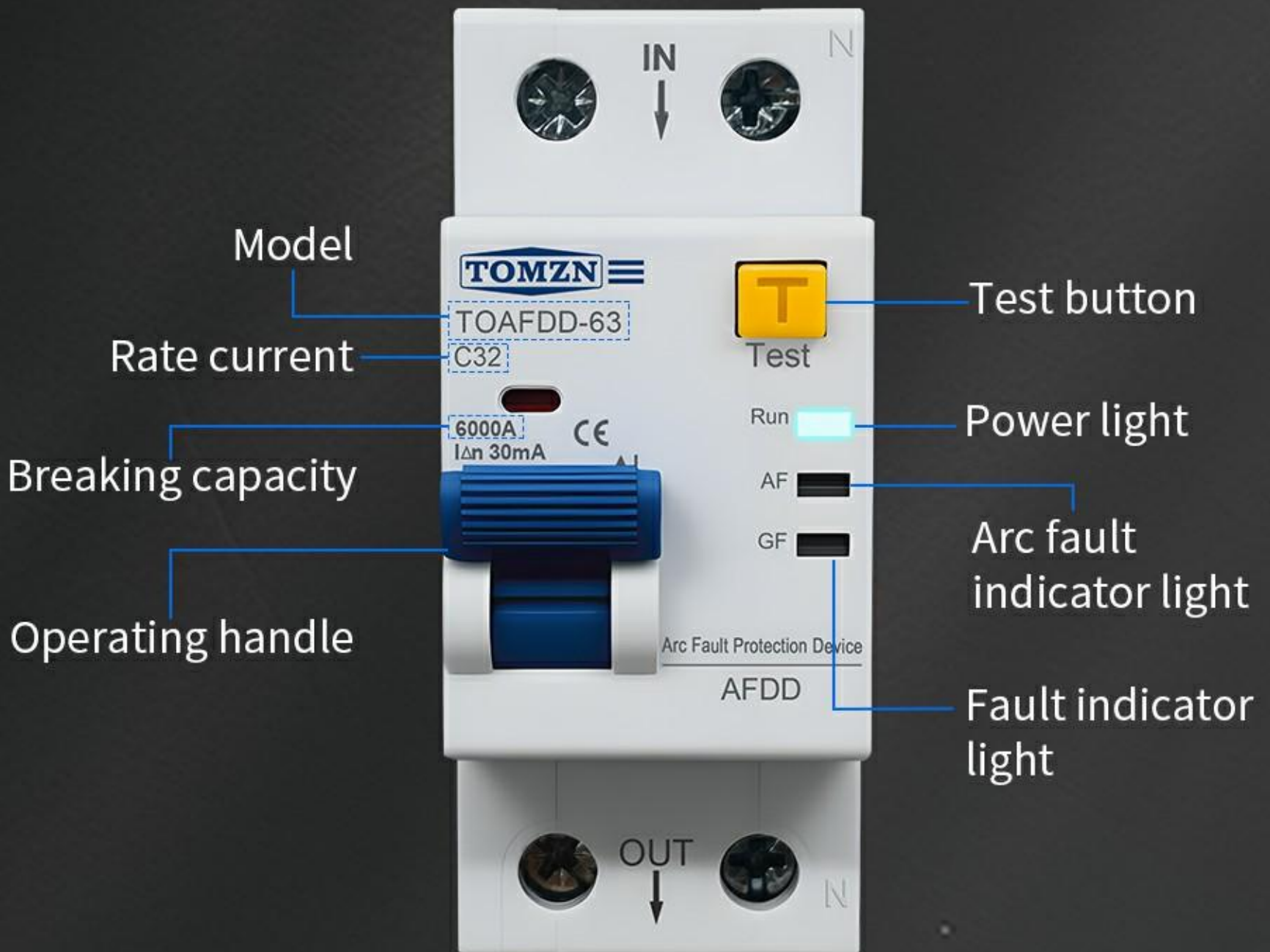
Meet the application requirements of various occasions
and can operate reliably in harsh environments.



INDICATOR OPERATION DISPLAY

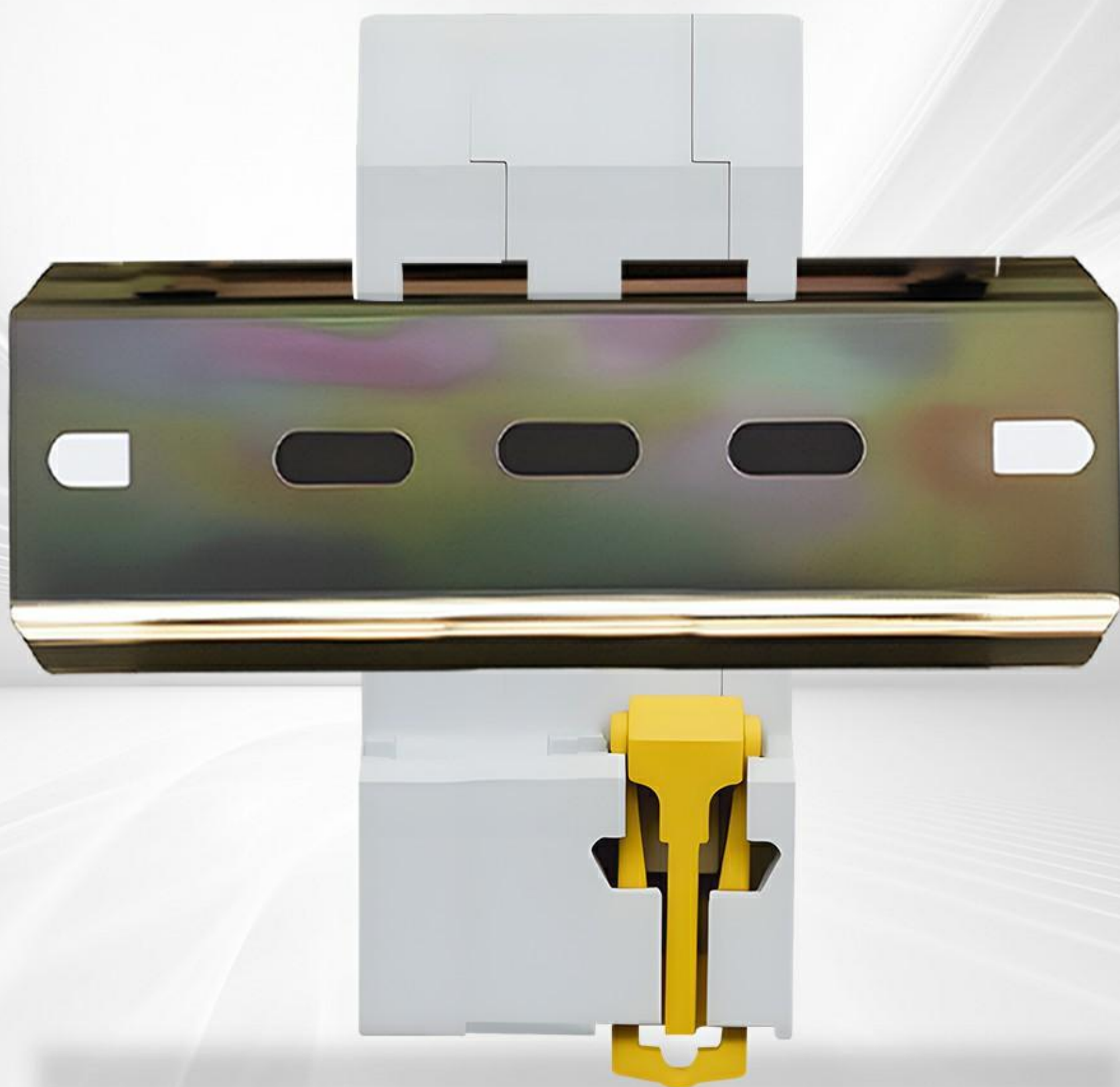


• FRONT VIEW •



HIGH-QUALITY MATERIALS, WITH STABLE PERFORMANCE

Using high-quality copper parts, it has excellent conductivity, a long service life and stable performance.



• EASY WIRING, DIY BY YOURSELF •

When power line input through the L and N,
please screw down to penetrate the insulating layer of
the power lines

L input **N input**



L output **N output**

PRODUCT DETAILS

6000A
I Δ n 30mA



WIDE HANDLE

Comfortable turn on
and turn off experience

PA66 FLAME RETARDANT MATERIAL

High temperature resistance
flame retardant resistance,
effectively improve usage safety

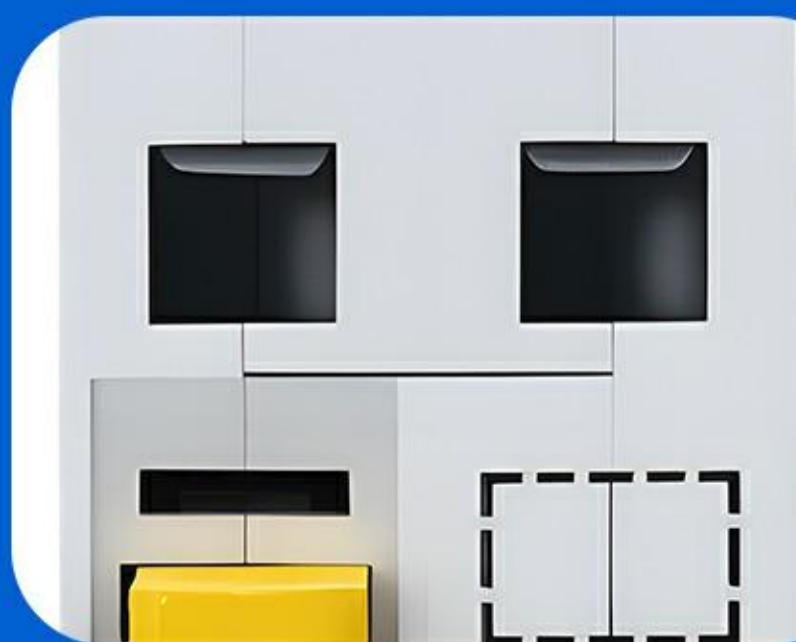


POSITIONING BUCKLE

One press to open, simple
disassembly and installation

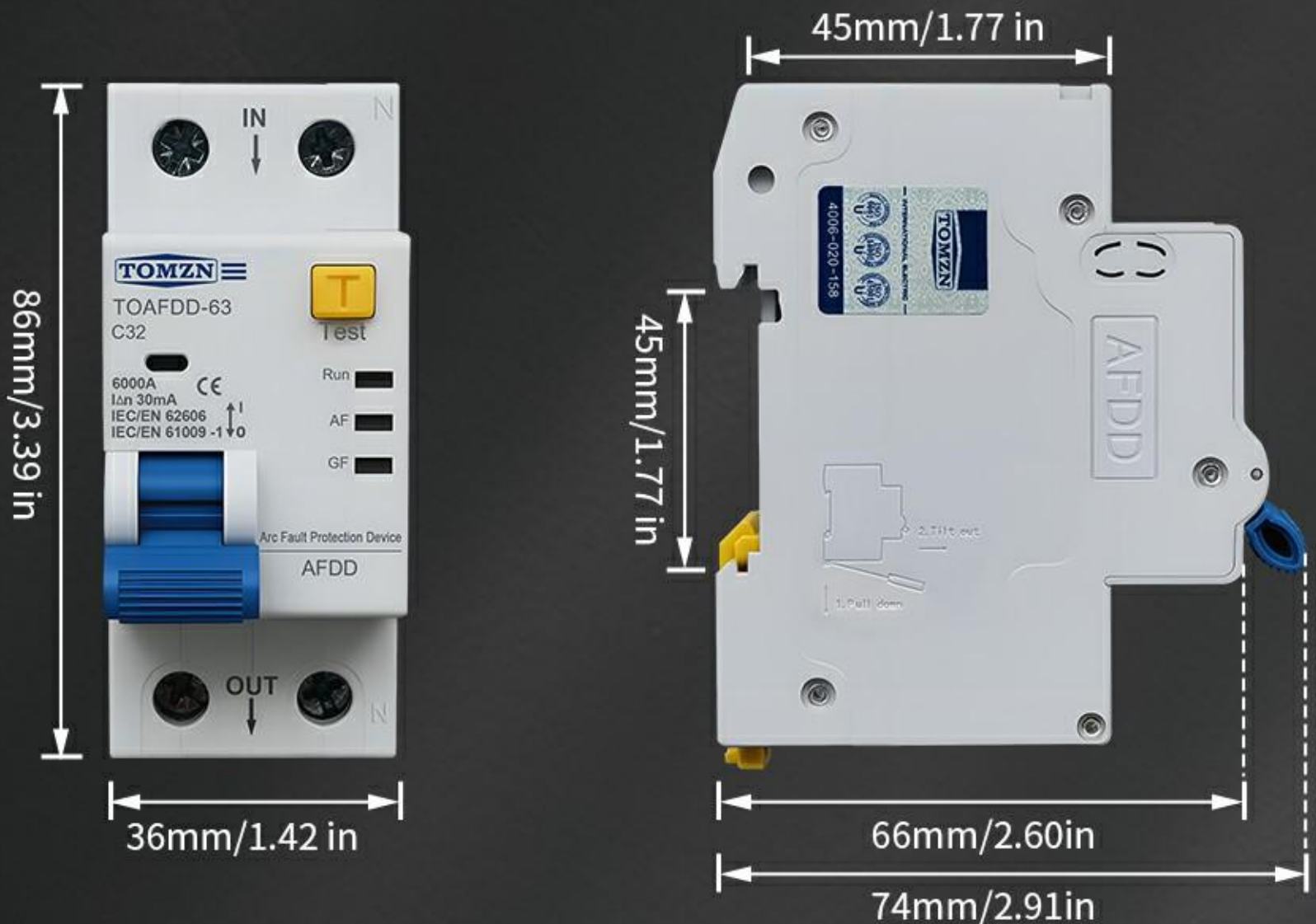
BUILT-IN TEXTURE

The connection
is more secure



• PRODUCT PARAMETER •

pole number	2P	Breaking capacity	6000A
Rated current(A)	16A 25A 32A 40A 63A	Rated Voltage	AC400V 50/60Hz
Electrical life	No less than 6000 operations		
Mechanical life	No less than 20000 operations		



FACTORY TOUR

